



01



ZZWŞ` Y Sa` YkgS` Agfa_ agf g ga f g





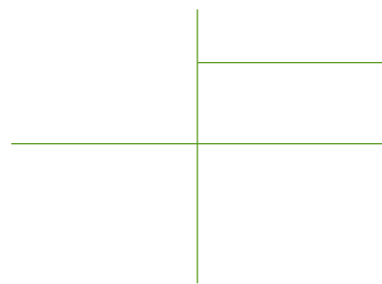
12.5 2030

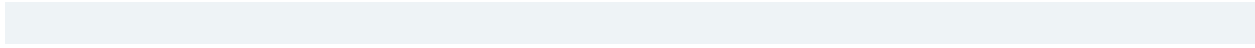
12.6



03

7 3 1
22 2







•

•

• 10

•

•





0



I

/

ISO 14001



	(GGB Z- -



2023

2023

23

23

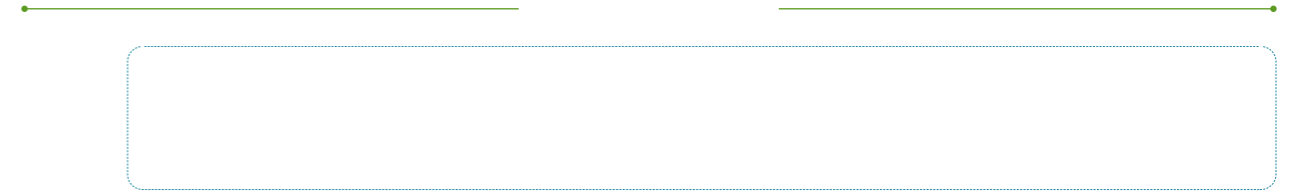
184 MWZ

2023





	• 100		20% -25%	
	•			
	• 65		320	
	• 33			300
	•			18,000
	• 1.8MW		218	
	• 185	160		
	• 35	8		90



0.636535 MWb

0.639915 MWb

3380 MWZ

0.636535MWb

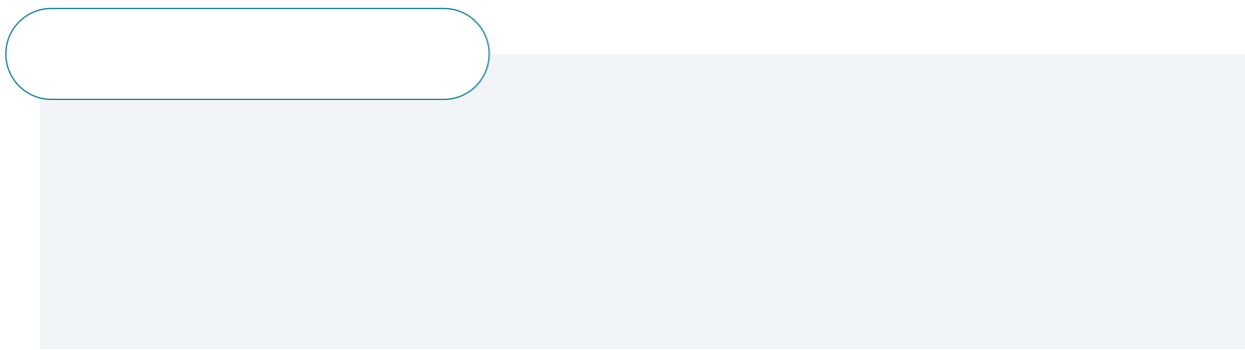
3.659915MWb

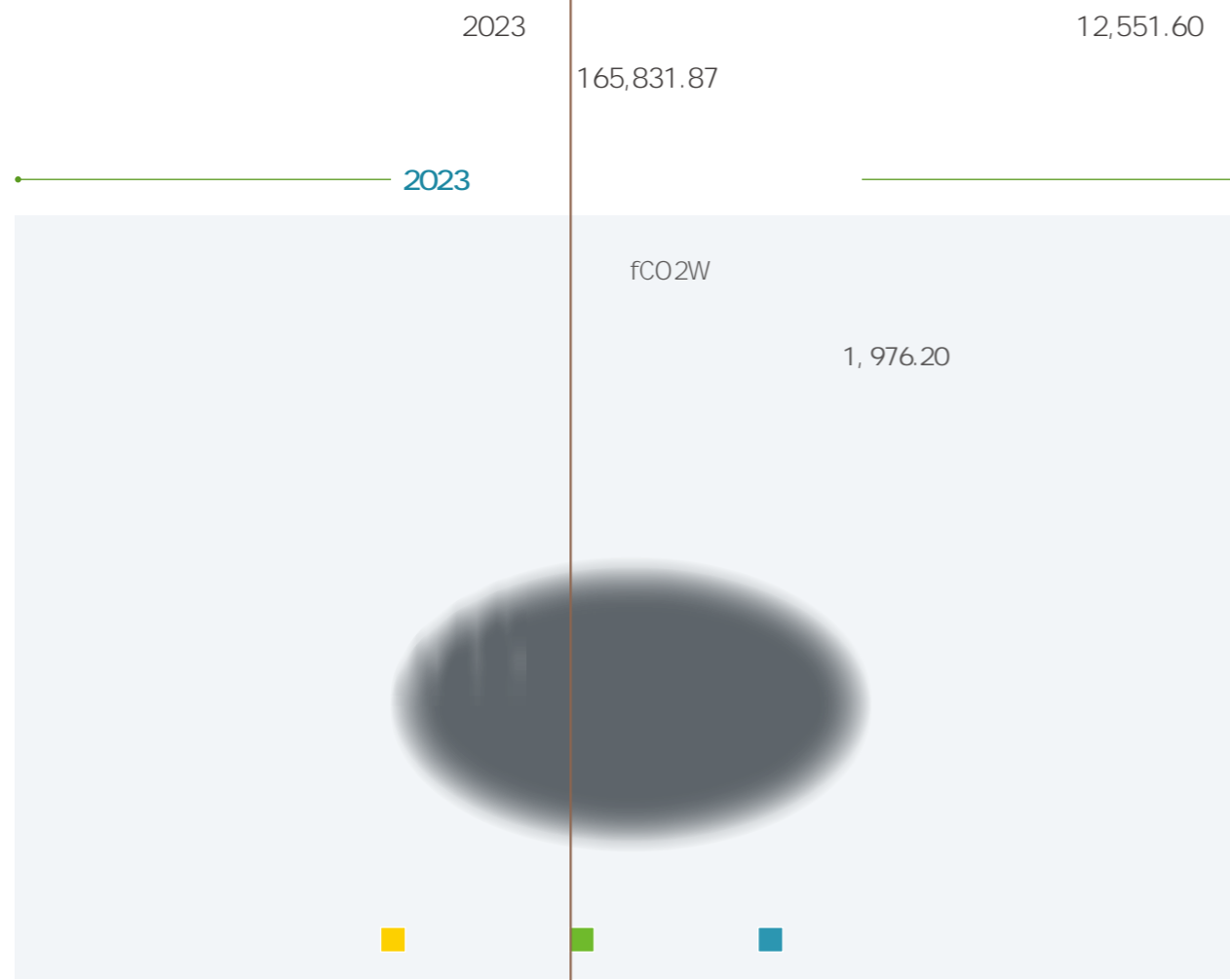


10

24

3,232

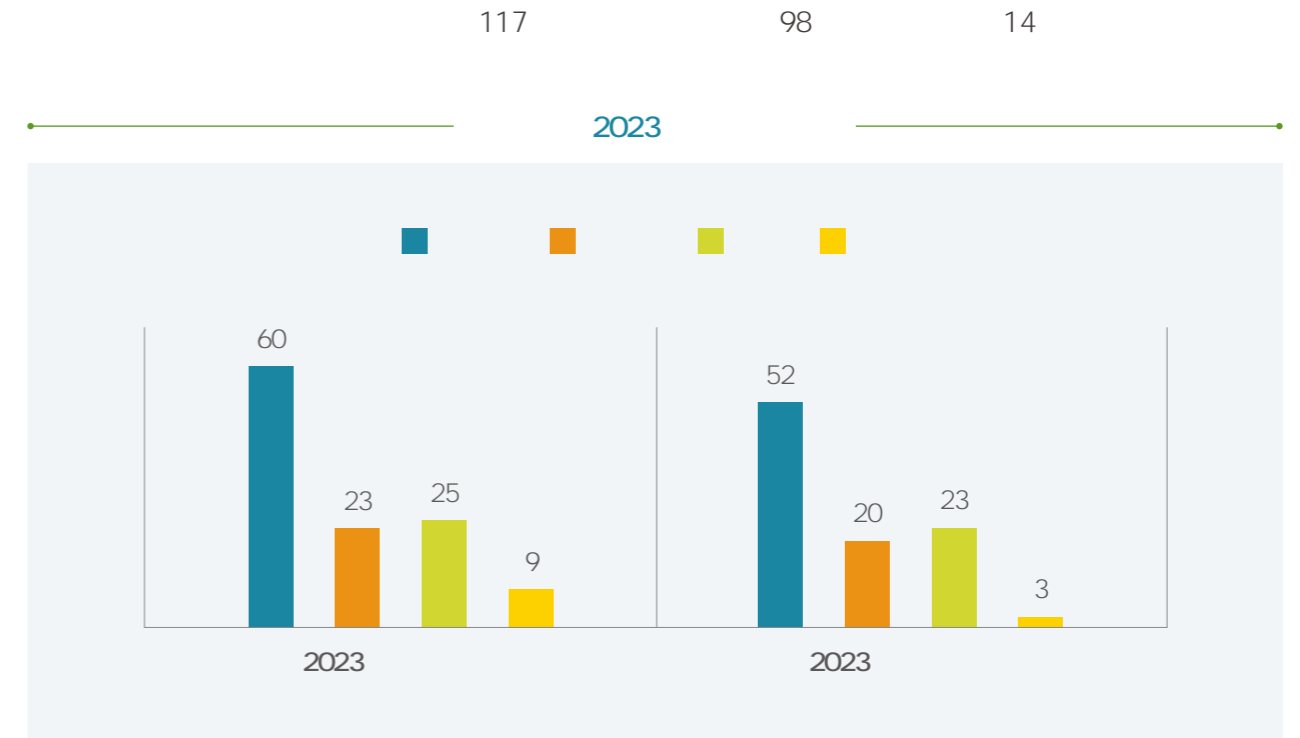
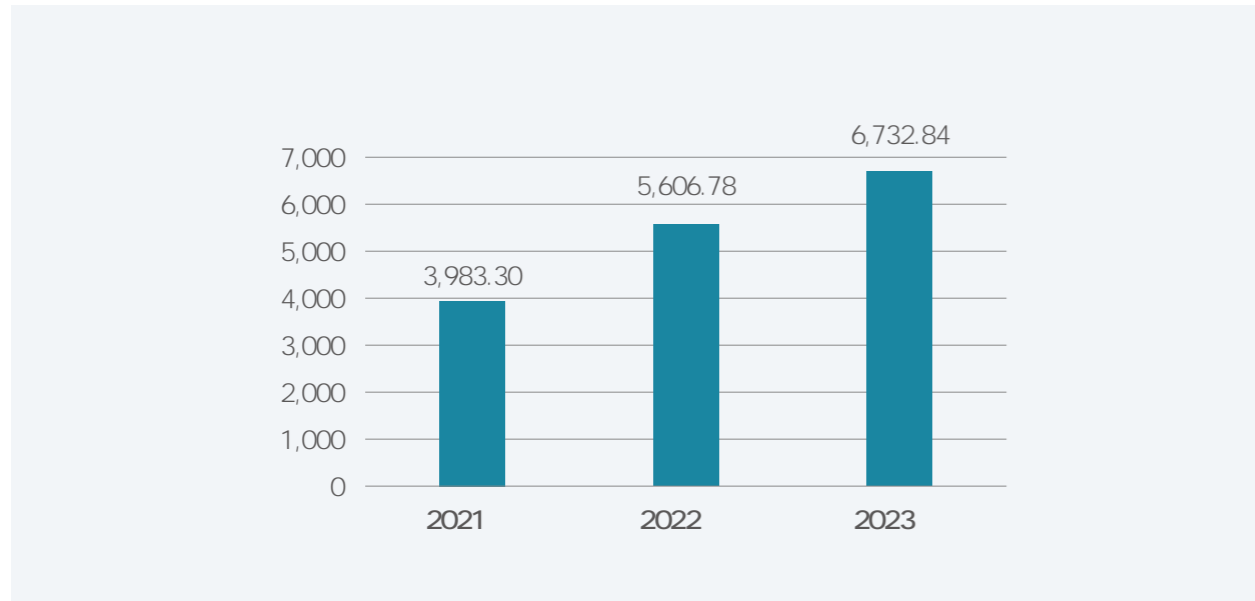




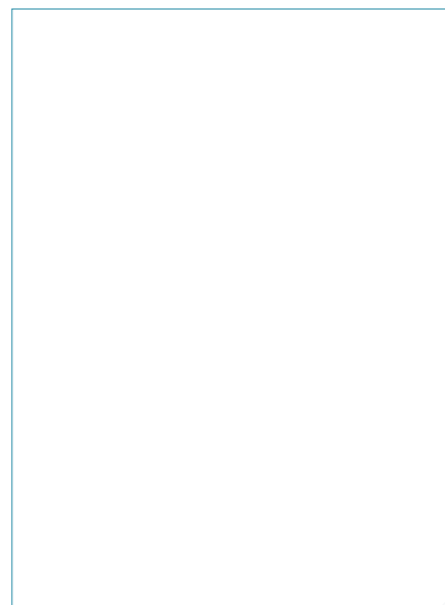


2023

20% 196 19.8% 6,732.84
CNAS



C@AE



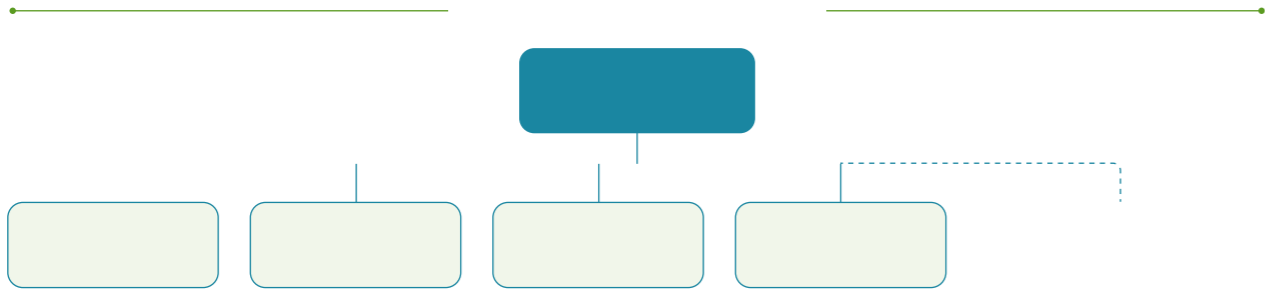
GB14166 ECER16



IATF16949 2016

PCDA

- - - -





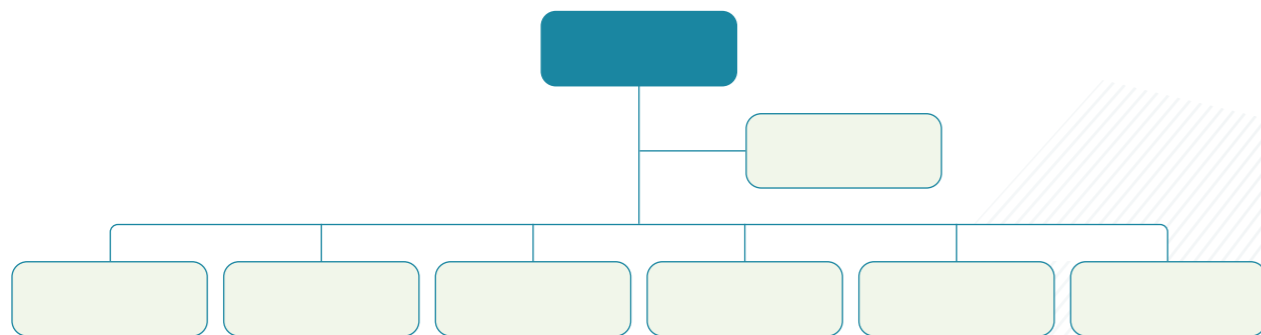


ç

3%

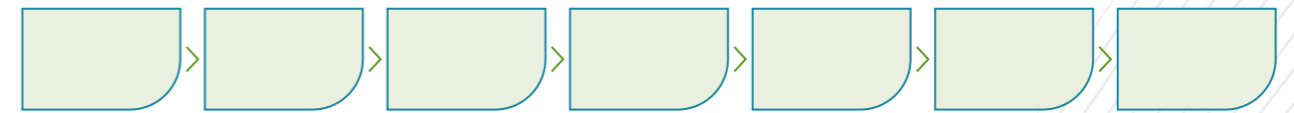
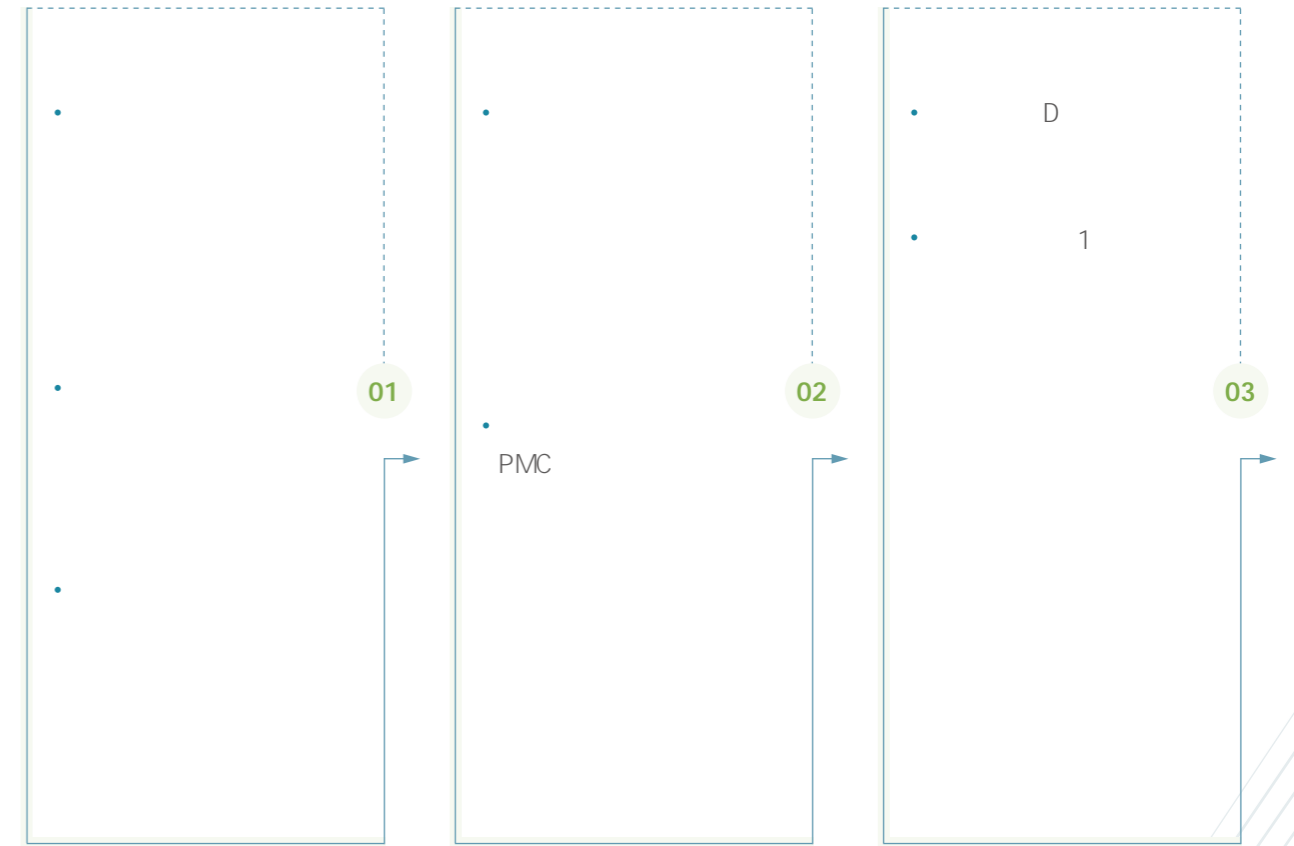
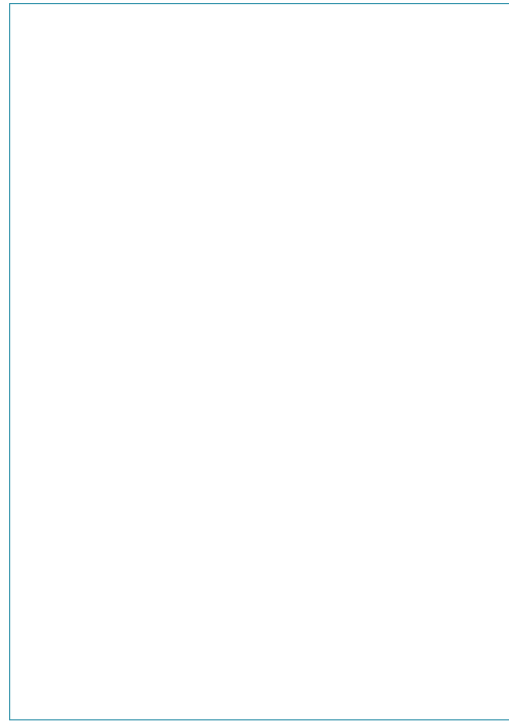
70

5%



-
-
-
-

-
-
-
-



ESG

ESG

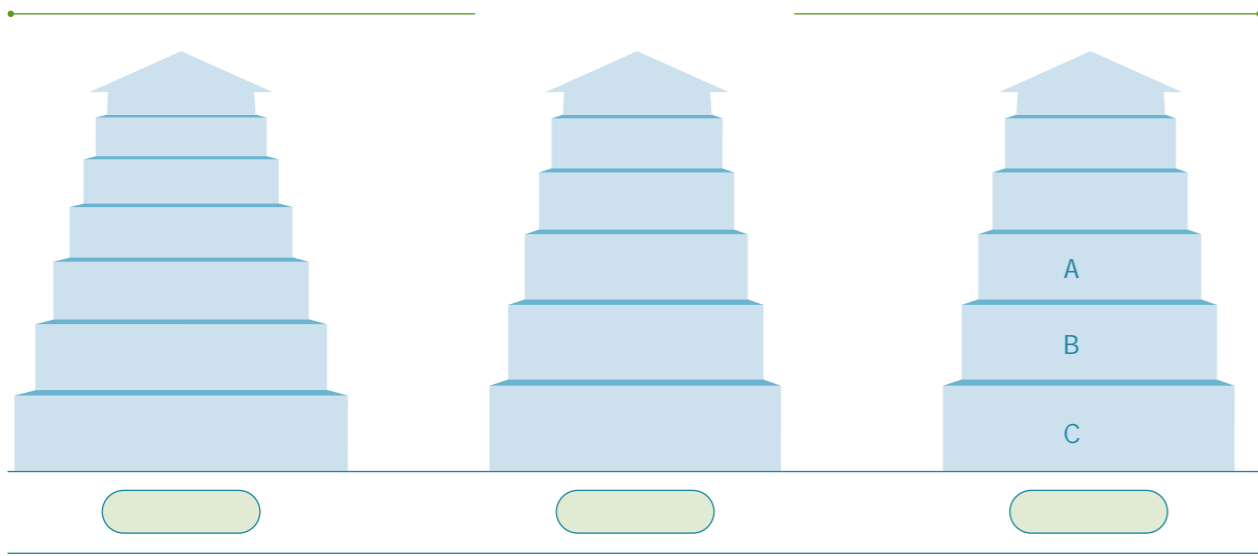
TS16949(IATF16949)













2023

51

2023





	/	0.08	0.08	0.10
4		—		
/				



		2021	2022	2023
	%	100.00	100.00	100.00

		2021	2022	2023
		112	185	196
		3,983.30	5,606.78	6,732.84
		—	—	28

		2021	2022	2023
		0	0	0
		0	0	0
		0	0	0

		2021	2022	2023
		69.5	76.4	51.0



GD;					
GRI 2 2021	2-10	Zffb://i i i . U` [`Xa.Ua_ .U` / W / S` `ag` UW_ W f/Vai ` `aSV?Tg^Wf[IV=122 0675711&S` `ag` UW[_ W#2024-07-19			
	2-11	2023 Zffb://i i i . U` [`Xa.Ua_ .U` / W / S` `ag` UW_ W f/Vai ` `aSV?Tg^Wf[IV=121 9622004&S` `ag` UW[_ W#2024-04-16			
	2-12	ESG -			
	2-13	ESG - ESG			
	2-14	ESG - ESG -			
	2-15	- -			
	2-16	ESG -			
	2-17	ESG -			
	2-18		2-18-S 2-18-T 2-18-U	/	
	2-19		2-19-S 2-19-T		

GD;					
GRI 2 2021	2-20		2-20-S 2-20-T		
	2-21		2-21-S 2-21-T 2-21-U		
	2-22	ESG -			
	2-23	- -			
	2-24	- -			
	2-25	- -			
	2-26	- -			
	2-27	-			
	2-28				
	2-29	ESG -			



GD;					
GRI 2	2-30	-			
2021					
GRI 3	3-1	ESG	-		
2021	3-2	ESG	-		
GRI 3	3-3	ESG	-		
2021		- ESG			
		2023			
		Zffb://i i i .			
		U` [`Xa.Ua_ .U` / W /			
		S` `ag` UW_ W f/Vai			
		` `aSV?Tg^W[IV=121			
		9622004&S` `ag` UW[
		_ W=2024			
GRI 201	201-1				
2016					
		2023			
		Zffb://i i i .			
		U` [`Xa.Ua_ .U` / W /			
		S` `ag` UW_ W f/Vai			
		` `aSV?Tg^W[IV=121			
		9622004&S` `ag` UW[

201_201_ 201_ 201_ 201_ 201_ g



--	--	--

GD;							
GRI3	3-3	ESG	-				
2021			-				
GRI 206	206-1			206-1-S	/		
2016				206-1-T			
GRI3	3-3	ESG	-				
2021			-				
GRI 302	302-1		-				
		- ESG					
	302-2			302-2-S	/		
				302-2-T			
				302-2-U			
2016	302-3		-				
		- ESG					
	302-4		-				
GRI 302	302-5			302-5-S	/		
				302-5-T			
				302-5-U			
GRI3	3-3	ESG	-				
2021			-				
GRI 303	303-1		-				
			-				
2018	303-2		-				



GD;					
GRI 403 2018	403-8	-	- ESG		
	403-9	- ESG			
	403-10	- ESG			
GRI3 2021	3-3	ESG	-		
GRI 404 2016	404-1				
ESG 2	-				
1					
3	3				



GD;					
GRI 413 2016	413-2		413-2-S	/	
GRI3 2021	3-3	ESG -			
GRI 414 2016	414-1		414-1-S	/	

413€ 1-S / ESG -
4C 4-1
2016



ESG

ESG

300893

2023 1 1 2023 12 31

GRI

2

2021

2023 12

ESG

ESG

2023 1 1 2023 12 31

H[ESG

1

ESG

0574-62499207

